



**BUILT WITH QUALITY,
BUILT FOR PRECISION**

www.lympa.co.in



INDEX

About Company	02
Membrane Element	03
FRP Pressure Vessel	08
Ultra Dose Dosing Pump	09
RO Controller	10
Solenoid Valve	13
Multoport Valves	13
Water Softner	14
Pressure Tubes	15
Industrial RO.	16
Ro Accessories	17

ABOUT LYMPHA TECHNOLOGY

At Lympha Technology, we don't just treat water – we redefine it. We are a next-generation water treatment company delivering smart, efficient, and sustainable solutions for homes, businesses, and industries. From advanced RO systems to complete water management solutions, we combine innovation, technology, and expertise to solve real-world water challenges. Driven by performance and precision, our systems are designed to optimize quality, reduce waste, and ensure long-term reliability. Every solution we create is tailored to meet evolving water standards and customer needs. We believe the future depends on how we manage water today – and we're here to make every drop count.

WHAT SETS US APART :

- Smart & Energy-Efficient Systems
- Customized Water Solutions
- Advanced Filtration Technology
- Reliable Performance & Support
- Sustainable Approach

OUR EXPERTISE :

- Industrial & Commercial RO Plants
- Water Softeners
- Sand & Carbon Filters
- Effluent Treatment Plants (ETP & STP)
- RO Spares & Components

OUR VISION :

To lead the future of water treatment through innovation and sustainability.



OUR MISSION :

To deliver intelligent water solutions that improve lives and protect resources.



MODEL STAR - 4040 - ULP

Excellent Productivity - Ultra Low Pressure Element



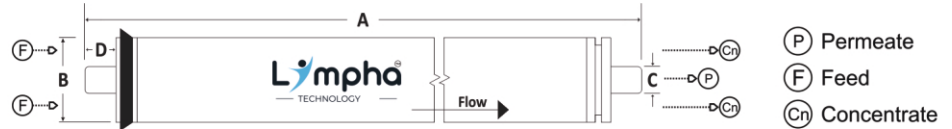
Maximum TDS (PPM)
1500*

SPECIFICATIONS :

Permeate Flow : 2200 gpd (8.33 m³/d)
Salt Rejection : 98.0% nominal (97.5% minimum)
Nominal Membrane Area : 85ft²(7.9m²)

TYPE :

Configuration : Spiral Wound
Membrane Polymer : Composite Polyamide
Brine Spacer Material : Polypropylene



DIMANSTIONS :

A Total Length : 40.0 inches (1016 mm)
B ATD Diameter : 3.9 inches (99.7 mm)
C Connection Out. Diameter : 0.75 inches (19.1 mm)
D Connection Hose Length : 1.05 inches (26.7 mm)

(After 30 min of operation) TEST CONDITIONS :

Solution NaCl : 1500 ppm
Applied Pressure : 150 psi (1.03 Mpa)
Operating Temperature : 25 °C (77 °F)
Permeate Recovery : 15%
PH Range : 6.5 / 7.0

OTHER OPERATING LIMITS :

Allowed pH Range for Chemical
Cleaning : 1-13
Feedwater pH : 2-11
Minimum ratio of concentrate to permeate
flow for any element : 5:1

MAXIMUM OPERATING LIMITS :

Operating Pressure : 600 psi (4.14 Mpa)
Temperature : 45 °C (113 °F)
Pressure Drop : 15 psi (0.1 Mpa)
Feed Flow : 16 gpm (3.60 m³/h)
Chlorine Concentration : <0.1 ppm
Feedwater SDI (15min) : 5.0
Feedwater Turbidity : 1.0 NTU

MODEL BRIGHT - 4040 - ULP

High Rejection, Excellent Productivity - Low Pressure Element



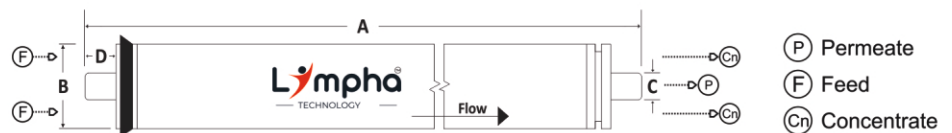
Maximum TDS (PPM)
2500*

SPECIFICATIONS :

Permeate Flow : 2200 gpd (8.33 m³/d)
Salt Rejection : 99.0% nominal (98.5% minimum)
Nominal Membrane Area : 85ft²(7.9m²)

TYPE :

Configuration : Spiral Wound
Membrane Polymer : Composite Polyamide
Brine Spacer Material : Polypropylene



DIMANSTIONS :

A Total Length : 40.0 inches (1016 mm)
B ATD Diameter : 3.9 inches (99.7 mm)
C Connection Out. Diameter : 0.75 inches (19.1 mm)
D Connection Hose Length : 1.05 inches (26.7 mm)

(After 30 min of operation) TEST CONDITIONS :

Solution NaCl : 1500 ppm
Applied Pressure : 150 psi (1.03 Mpa)
Operating Temperature : 25 °C (77 °F)
Permeate Recovery : 15%
PH Range : 6.5 + 7.0

OTHER OPERATING LIMITS :

Allowed pH Range for Chemical
Cleaning : 1-13
Feedwater pH : 2-11
Minimum ratio of concentrate to permeate
flow for any element : 5:1

MAXIMUM OPERATING LIMITS :

Operating Pressure : 600 psi (4.14 Mpa)
Temperature : 45 °C (113 °F)
Pressure Drop : 15 psi (0.1 Mpa)
Feed Flow : 16 gpm (3.60 m³/h)
Chlorine Concentration : <0.1 ppm
Feedwater SDI (15min) : 5.0
Feedwater Turbidity : 1.0 NTU

MODEL USHINE - 4040 - ULP

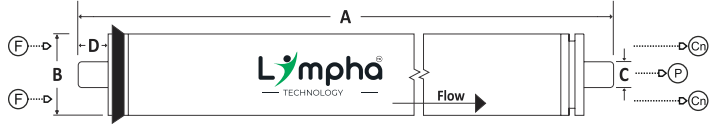
High Rejection, Excellent Productivity - Low Pressure Element

TYPE :

Configuration : Spiral Wound
Membrane Polymer : Composite Polyamide
Brine Spacer Material : Polypropylene

SPECIFICATIONS :

Permeate Flow : 2200 gpd (8.33 m³/d)
Salt Rejection : 99.0% nominal (98.5% minimum)
Nominal Membrane Area : 85ft²(7.9m²)



- (P) Permeate
- (F) Feed
- (Cn) Concentrate

TEST CONDITIONS :

 (After 30 min of operation)

Solution NaCl : 1500 ppm
Applied Pressure : 150 psi (1.03 Mpa)
Operating Temperature : 25 °C (77 °F)
Permeate Recovery : 15%
PH Range : 6.5 + 7.0

DIMANSTIONS :

A Total Length : 40.0 inches (1016 mm)
B ATD Diameter : 3.9 inches (99.7 mm)
C Connection Out. Diameter : 0.75 inches (19.1 mm)
D Connection Hose Length : 1.05 inches (26.7 mm)

MAXIMUM OPERATING LIMITS :

Operating Pressure : 600 psi (4.14 Mpa)
Temperature : 45 °C (113 °F)
Pressure Drop : 15 psi (0.1 Mpa)
Feed Flow : 16 gpm (3.60 m³/h)
Chlorine Concentration : <0.1 ppm
Feedwater SDI (15min) : 5.0
Feedwater Turbidity : 1.0 NTU

OTHER OPERATING LIMITS :

Allowed pH Range for Chemical Cleaning : 1-13
Feedwater pH : 2-11
Minimum ratio of concentrate to permeate flow for any element : 5:1



Maximum TDS (PPM)
3000*

MODEL GLOW - 4040 - BW

High Rejection, Excellent Productivity - Brackish Water Element

TYPE :

Configuration : Spiral Wound
Membrane Polymer : Composite Polyamide
Brine Spacer Material : Polypropylene

SPECIFICATIONS :

Permeate Flow : 2000 gpd (7.57 m³/d)
Salt Rejection : 99.5% nominal (99.0% minimum)
Nominal Membrane Area : 85ft²(7.9m²)



- (P) Permeate
- (F) Feed
- (Cn) Concentrate

TEST CONDITIONS :

 (After 30 min of operation)

Solution NaCl : 2000 ppm
Applied Pressure : 225 psi (1.55 Mpa)
Operating Temperature : 25 °C (77 °F)
Permeate Recovery : 15%
PH Range : 6.5 + 7.0

DIMANSTIONS :

A Total Length : 40.0 inches (1016 mm)
B ATD Diameter : 3.9 inches (99.7 mm)
C Connection Out. Diameter : 0.75 inches (19.1 mm)
D Connection Hose Length : 1.05 inches (26.7 mm)

MAXIMUM OPERATING LIMITS :

Operating Pressure : 600 psi (4.14 Mpa)
Temperature : 45 °C (113 °F)
Pressure Drop : 15 psi (0.1 Mpa)
Feed Flow : 16 gpm (3.60 m³/h)
Chlorine Concentration : <0.1 ppm
Feedwater SDI (15min) : 5.0
Feedwater Turbidity : 1.0 NTU

OTHER OPERATING LIMITS :

Allowed pH Range for Chemical Cleaning : 1-13
Feedwater pH : 2-11
Minimum ratio of concentrate to permeate flow for any element : 5:1



Maximum TDS (PPM)
5000*

MODEL STAR - 8040 - ULP

Excellent Productivity - Ultra Low Pressure Element



Maximum TDS (PPM)
1500*

SPECIFICATIONS :

Permeate Flow : 10000 gpd (37.8 m³/d)
Salt Rejection : 98.0% nominal (97.5% minimum)
Nominal Membrane Area : 400ft² (37.2m²)

TYPE :

Configuration : Spiral Wound
Membrane Polymer : Composite Polyamide
Brine Spacer Material : Polypropylene



DIMANSTIONS :

A Total Length : 40.0 inches (1016 mm)
B ATD Diameter : 7.89 inches (200 mm)
C Connection Out. Diameter :
1.125 inches (28.6 mm)

(After 30 min of operation) TEST CONDITIONS :

Solution NaCl : 1500 ppm
Applied Pressure : 150 psi (1.03 Mpa)
Operating Temperature : 25 °C (77 °F)
Permeate Recovery : 15%
PH Range : 6.5 + 7.0

OTHER OPERATING LIMITS :

Allowed pH Range for Chemical
Cleaning : 1 - 13
Feedwater pH : 2 - 11
Minimum ratio of concentrate to permeate
flow for any element : 5 : 1

MAXIMUM OPERATING LIMITS :

Operating Pressure : 600 psi (4.14 Mpa)
Temperature : 45 °C (113 °F)
Pressure Drop : 15 psi (0.1 Mpa)
Feed Flow : 75 gpm (17.0 m³/h)
Chlorine Concentration : <0.1 ppm
Feedwater SDI (15min) : 5.0
Feedwater Turbidity : 1.0 NTU

MODEL BRIGHT - 8040 - LP

High Rejection, Excellent Productivity - Low Pressure Element



Maximum TDS (PPM)
2500*

SPECIFICATIONS :

Permeate Flow : 10000 gpd (37.8 m³/d)
Salt Rejection : 99.0% nominal (98.5% minimum)
Nominal Membrane Area : 400ft²(37.2m²)

TYPE :

Configuration : Spiral Wound
Membrane Polymer : Composite Polyamide
Brine Spacer Material : Polypropylene



DIMANSTIONS :

A Total Length : 40.0 inches (1016 mm)
B ATD Diameter : 7.89 inches (200 mm)
C Connection Out. Diameter :
1.125 inches (28.6 mm)

(After 30 min of operation) TEST CONDITIONS :

Solution NaCl : 1500 ppm
Applied Pressure : 150 psi (1.03 Mpa)
Operating Temperature : 25 °C (77 °F)
Permeate Recovery : 15%
PH Range : 6.5 + 7.0

OTHER OPERATING LIMITS :

Allowed pH Range for Chemical
Cleaning : 1-13
Feedwater pH : 2-11
Minimum ratio of concentrate to permeate
flow for any element : 5:1

MAXIMUM OPERATING LIMITS :

Operating Pressure : 600 psi (4.14 Mpa)
Temperature : 45 °C (113 °F)
Pressure Drop : 15 psi (0.1 Mpa)
Feed Flow : 75 gpm (17.0 m³/h)
Chlorine Concentration : <0.1 ppm
Feedwater SDI (15min) : 5.0
Feedwater Turbidity : 1.0 NTU

MODEL U-SHINE - 8040 - LP

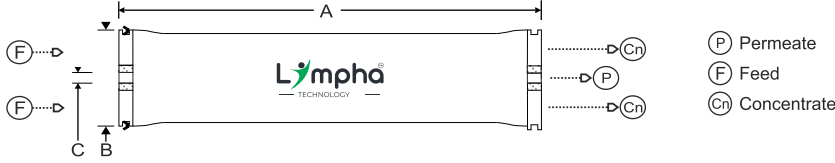
High Rejection, Excellent Productivity - Brackish Water Element

TYPE :

Configuration : Spiral Wound
Membrane Polymer : Composite Polyamide
Brine Spacer Material : Polypropylene

SPECIFICATIONS :

Permeate Flow : 10000 gpd (37.8 m³/d)
Salt Rejection : 99.0% nominal (98.5% minimum)
Nominal Membrane Area : 400ft²(37.2m²)



TEST CONDITIONS : (After 30 min of operation)

Solution NaCl : 1500 ppm
Applied Pressure : 150 psi (1.03 Mpa)
Operating Temperature : 25 °C (77 °F)
Permeate Recovery : 15%
PH Range : 6.5 + 7.0

DIMANSTIONS :

A Total Length : 40.0 inches (1016 mm)
B ATD Diameter : 7.89 inches (200 mm)
C Connection Out. Diameter : 1.125 inches (28.6 mm)

MAXIMUM OPERATING LIMITS :

Operating Pressure : 600 psi (4.14 Mpa)
Temperature : 45 °C (113 °F)
Pressure Drop : 15 psi (0.1 Mpa)
Feed Flow : 75 gpm (17.0 m³/h)
Chlorine Concentration : <0.1 ppm
Feedwater SDI (15min) : 5.0
Feedwater Turbidity : 1.0 NTU

OTHER OPERATING LIMITS :

Allowed pH Range for Chemical Cleaning : 1 - 13
Feedwater pH : 2 - 11
Minimum ratio of concentrate to permeate flow for any element : 5 : 1



Maximum TDS (PPM)
3000*

MODEL GLOW - 8040 - BW

High Rejection, Excellent Productivity - Brackish Water Element

TYPE :

Configuration : Spiral Wound
Membrane Polymer : Composite Polyamide
Brine Spacer Material : Polypropylene

SPECIFICATIONS :

Permeate Flow : 9600 gpd (36.3 m³/d)
Salt Rejection : 99.5% nominal (99.0% minimum)
Nominal Membrane Area : 400ft² (37.2m²)



TEST CONDITIONS : (After 30 min of operation)

Solution NaCl : 2000 ppm
Applied Pressure : 225 psi (1.55 Mpa)
Operating Temperature : 25 °C (77 °F)
Permeate Recovery : 15%
PH Range : 6.5 + 7.0

DIMANSTIONS :

A Total Length : 40.0 inches (1016 mm)
B ATD Diameter : 7.89 inches (200 mm)
C Connection Out. Diameter : 1.125 inches (28.6 mm)

MAXIMUM OPERATING LIMITS :

Operating Pressure : 600 psi (4.14 Mpa)
Temperature : 45 °C (113 °F)
Pressure Drop : 15 psi (0.1 Mpa)
Feed Flow : 75 gpm (17.0 m³/h)
Chlorine Concentration : <0.1 ppm
Feedwater SDI (15min) : 5.0
Feedwater Turbidity : 1.0 NTU

OTHER OPERATING LIMITS :

Allowed pH Range for Chemical Cleaning : 1 - 13
Feedwater pH : 2 - 11
Minimum ratio of concentrate to permeate flow for any element : 5 : 1



Maximum TDS (PPM)
5000*

MODEL SPARKLE - 4040 - SW

High Rejection, Excellent Productivity - Sea Water Element



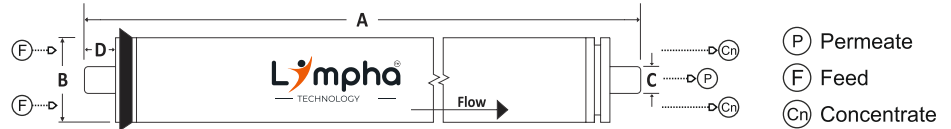
Maximum TDS (PPM)
25000*

SPECIFICATIONS :

Permeate Flow : 1900 gpd (7.0 m³/d)
Salt Rejection : 99.7% nominal (99.5% minimum)
Nominal Membrane Area : 85ft² (7.9m²)

TYPE :

Configuration : Spiral Wound
Membrane Polymer : Composite Polyamide
Brine Spacer Material : Polypropylene



DIMANSTIONS :

A Total Length : 40.0 inches (1016 mm)
B ATD Diameter : 3.9 inches (99.7 mm)
C Connection Out. Diameter : 0.75 inches (19.1 mm)
D Connection Hose Length : 1.05 inches (26.7 mm)

(After 30 min of operation) TEST CONDITIONS :

Solution NaCl : 32000 ppm
Applied Pressure : 800 psi (5.51 Mpa)
Operating Temperature : 25 °C (77 °F)
Permeate Recovery : 8%
PH Range : 6.5 + 7.0

OTHER OPERATING LIMITS :

Allowed pH Range for Chemical
Cleaning : 1.2 - 12
Feedwater pH : 2 - 11
Minimum ratio of concentrate to permeate
flow for any element : 5 : 1

MAXIMUM OPERATING LIMITS :

Operating Pressure : 1200 psi (8.27 Mpa)
Temperature : 45 °C (113 °F)
Pressure Drop : 15 psi (0.1 Mpa)
Feed Flow : 30 gpm (6.75 m³/h)
Chlorine Concentration : <0.1 ppm
Feedwater SDI (15min) : 5.0
Feedwater Turbidity : 1.0 NTU

MODEL SPARKLE - 8040 - SW

High Rejection, Excellent Productivity - Sea Water Element



Maximum TDS (PPM)
35000*

SPECIFICATIONS :

Permeate Flow : 9400 gpd (35.6 m³/d)
Salt Rejection : 99.7% nominal (99.5% minimum)
Nominal Membrane Area : 440ft² (40.9m²)

TYPE :

Configuration : Spiral Wound
Membrane Polymer : Composite Polyamide
Brine Spacer Material : Polypropylene



DIMANSTIONS :

A Total Length : 40.0 inches (1016 mm)
B ATD Diameter : 7.89 inches (200 mm)
C Connection Out. Diameter :
1.125 inches (28.6 mm)

(After 30 min of operation) TEST CONDITIONS :

Solution NaCl : 32000 ppm
Applied Pressure : 800 psi (5.51 Mpa)
Operating Temperature : 25 °C (77 °F)
Permeate Recovery : 8%
PH Range : 6.5 + 7.0

OTHER OPERATING LIMITS :

Allowed pH Range for Chemical
Cleaning : 1.2 - 12
Feedwater pH : 2 - 11
Minimum ratio of concentrate to permeate
flow for any element : 5 : 1

MAXIMUM OPERATING LIMITS :

Operating Pressure : 1200 psi (8.27 Mpa)
Temperature : 45 °C (113 °F)
Pressure Drop : 15 psi (0.1 Mpa)
Feed Flow : 135 gpm (30.6 m³/h)
Chlorine Concentration : <0.1 ppm
Feedwater SDI (15min) : 5.0
Feedwater Turbidity : 1.0 NTU

Excellent Mechanical Strength

Negligible Maintenance

Corrosion Resistance

Max. Pressure 10 Bar

Max. Temp. 49° C

Available in Various Sizes



MODEL	OPENING	OPERATING PRESSURE	VOLUME	DIAMETER	TOTAL TANK HEIGHT	TOTAL HEIGHT OF TANK WITH BASE	OPERATING PRESSURE
		(BAR)	(LITERS)	(mm)	(mm)	(mm)	(TYPE)
1054	2.5" TOP	10	62	62	1360	1410	ROUND
1248	2.5" TOP	10	84	82	1205	1240	ROUND
1354	2.5" TOP	10	104	104	1360	1410	ROUND
1465	4" TOP	10	145	360	1660	1685	ROUND
1465	4" TOP & BOTTOM	10	145	360	1665	1900	TRIPOD
1665	4" TOP	10	193	410	1650	1690	ROUND
1665	4" TOP & BOTTOM	10	193	410	1660	1905	TRIPOD
1865	4" TOP & BOTTOM	10	250	470	1645	1725	ROUND
1865	4" TOP & BOTTOM	10	250	470	1645	2051	TRIPOD
2162	4" TOP & BOTTOM	10	315	540	1565	1885	TRIPOD
2472	4" TOP & BOTTOM	10	465	610	1820	2245	TRIPOD
3072	4" TOP & BOTTOM	10	721	768	1825	2245	TRIPOD
3672	4" TOP & BOTTOM	10	1060	920	1826	2254	TRIPOD
4272	6" TOP & BOTTOM	10	1360	1074	1920	2245	TRIPOD
4872	6" TOP & BOTTOM	10	1840	1226	2130	2245	TRIPOD

DOSING FLOW RATE WITH RESPECT TO BACK PRESSURE.

Pressure (Kg/cm ²)	Flow Rate (LPH)
open	20.0
1.0	10.0
2.0	8.0
3.0	7.0
4.0	6.0
5.0	5.5
6.0	5.0

MATERIAL OF CONSTRUCTION FOR WETTE PARTS

Pump Head : PP, PVDF, PTFE & Ss316

Diaphragm : PTFE.

Connectors : PP, PVDF, PTFE & Ss316

Suction & Discharge Tubing : PE & PTFE

Ball Seal : Neoprene



SPECIFICATION

Electrical : 1PH, 230 Volts AC (±20%), 50Hz.

Suction tubing : 4/6 mm Hose

Compression Fitting.

Discharge : 4/6 mm Hose Compression Fitting.

Discharge valve thr : 1/2" BSP threading.

Dosing rate : 1.5/3/6/10/ At 4 Kg/cm².

Stroke/minute : ≤ 400.

Noise : ≤ 55 dB.

Negative Suction : 1.5 M.

Weight : 3.2 KG.

Fluid temperature : +5°C~+60°C.

Environment temperature range : -10°C ~ +45 °C.

OPTIONAL

Level Switch Interlock :

Normally Open

DIAPHRAGM

Diameter	60 mm
Material	Pure PTFE

FLUID PARAMETERS

Fluid temperature range	-15c ~ 60c
Viscosity range	0.3 ~ 1000cps

ENVIRONMENT PARAMETERS

Environment temperature range	-10c ~ + 45c
Outdoor Installation	Yes, with shelter protection from rain and direct sunlight.



RO CONTROLLER STAR 1:1

INDUSTRIAL RO CONTROLLER

- † Microcontroller Based Qualitative Accuracy Oriented Pre-programmed Controller With Required Safety Features Like
- † Pressure
- † Level
- † Input Low And High Voltage Protection
- † Over Current
- † Which Helps Ro For Safe, Smooth, And Smart Automation.

FEATURES

- † Micro-controller And Smps Based Ro Controller.
- † 7 Segment Display.
- † Tds And Conductivity Display.
- † Auto And Manual Mode Option.
- † Rwt And Twt Tank Float.
- † Flushing And Flushing Interval Time.

TECHNICAL SPECIFICATION

- † Supply Voltage : 170v Ac - 240v Ac.
- † Current Range 0-30a.
- † Working Temperature : 0-50c'.
- † Phase 1:1.
- † Pump Capacity : Rwp 1.5 Hp And Hpp 2 Hp.
- † Size: 200(h) X 160(l) X 60(d).



RO CONTROLLER STAR PLUS 1:1

INDUSTRIAL RO CONTROLLER

- † Microcontroller Based Qualitative Accuracy Oriented Pre-programmed Controller With Required Safety Features Like
- † Pressure
- † Level
- † Input Low And High Voltage Protection
- † Over Current
- † Which Helps Ro For Safe, Smooth, And Smart Automation.

FEATURES

- † Micro-controller And Smps Based Ro Controller.
- † 7 Segment Display.
- † High & Low Voltage Protection.
- † Tds And Conductivity Display.
- † Auto And Manual Mode Option.
- † Rwt And Twt Tank Float.
- † Flushing And Flushing Interval Time.

TECHNICAL SPECIFICATION

- † Supply Voltage; 170v Ac - 280v Ac.
- † Current Range 0-30a.
- † Working Temperature: 0-50 C'.
- † Phase 1:1.
- † Pump Capacity: Rwp 1.5 Hp And Hpp 2 Hp.
- † Size: 250(h) X 225(l) X 60(d).



RO CONTROLLER SHINE 1:1

INDUSTRIAL RO CONTROLLER

- ✦ Microcontroller Based Qualitative Accuracy Oriented Pre-programed Contoller With Required Safety Features Like
- ✦ Pressure
- ✦ Level
- ✦ Input Low And High Voltage Protection
- ✦ Over Current
- ✦ Which Helps Ro For Safe, Smooth, And Smart Automation.

FEATURES

- ✦ Micro-controller And Smps Based Ro Controller.
- ✦ 7 Segment Display.
- ✦ Auto Ampeare Settings For Rwp & Hpp.
- ✦ High & Low Voltage Protection.
- ✦ Rwp & Hpp Overload And Dry Run Protection.
- ✦ Uv & Dosing Pump Protection.
- ✦ Hps & Lps Monitoring.
- ✦ Dosing Level Float.
- ✦ Tds And Conductivity Display.
- ✦ Auto And Manual Mode Option.
- ✦ Rwt And Twt Tank Float.
- ✦ Flushing And Flushing Interval Time.
- ✦ All Setting Are Editable.

TECHNICAL SPECIFICATION

- ✦ Supply Voltage : 170v Ac - 240v Ac.
- ✦ Current Range 0-30a.
- ✦ Working Temperature : 0-50c'.
- ✦ Phase 1:1.
- ✦ Pump Capacity : Rwp 1.5 Hp And Hpp 2 Hp.
- ✦ Size: 200(h) X 160(l) X 60(d).



RO CONTROLLER SHINE PLUS 1:1

INDUSTRIAL RO CONTROLLER

- ✦ Microcontroller Based Qualitative Accuracy Oriented Pre-programed Contoller With Required Safety Features Like
- ✦ Pressure
- ✦ Level
- ✦ Input Low And High Voltage Protection
- ✦ Over Current
- ✦ Which Helps Ro For Safe, Smooth, And Smart Automation.

FEATURES

- ✦ Micro-controller And Smps Based Ro Controller.
- ✦ All Ampv's Connection.
- ✦ Display-2 Line 16-bit Lcd.
- ✦ Auto Ampeare Settings For Rwp & Hpp.
- ✦ High & Low Voltage Protection.
- ✦ Rwp & Hpp Overload And Dry Run Protection.
- ✦ Uv & Dosing Pump Protection.
- ✦ Hps & Lps Monitoring.
- ✦ Dosing Level Float.
- ✦ Tds And Conductivity Dislay.
- ✦ Auto And Manual Mode Option.
- ✦ Rwt And Twt Tank Float.
- ✦ Flushing And Flushing Interval Time.
- ✦ All Setting Are Editable.

TECHNICAL SPECIFICATION

- ✦ Supply Voltage : 170v Ac-280v Ac.
- ✦ Current Range 0-30a.
- ✦ Working Temperature : 0-50 C.
- ✦ Phase 1:1.
- ✦ Pump Capacity: Rwp 1.5 Hp And Hpp 2 Hp.
- ✦ Size: 250(h) x 225(1) x 60(d)



RO CONTROLLER GLOW 1:3

INDUSTRIAL RO CONTROLLER

- Microcontroller Based Qualitative Accuracy Oriented Pre-programmed Controller With Required Safety Features Like
- Pressure
- Level
- Input Low And High Voltage Protection
- Over Current
- Which Helps Ro For Safe, Smooth, And Smart Automation.

FEATURES

- Micro-controller And Smps Based Ro Controller.
- 3-phase-voltage Display, Monitoring Single Phase Preventer And Voltage Unbalance Protection In All 3-phase Panels.
- Rwp & Hpp Overload And Dry Run Protection.
- Auto Ampeare Settings For Rwp & Hpp.
- All Ampv's Connection.
- Display-2 Line 16-bit Lcd.
- High & Low Voltage Protection.
- Uv & Dosing Pump Protection.
- Hps & Lps Monitoring.
- Dosing Level Float.
- Service And Trip Time.
- Back Wash And Rinse Time.
- 7 Segment Display.
- Tds And Conductivity Display.
- Auto And Manual Mode Option.
- Rwt And Twt Tank Float.
- Flushing And Flushing Interval Time.
- All Setting Are Editable.

TECHNICAL SPECIFICATION

- Supply Voltage: 170v Ac-280v Ac.
- Current Range 0-30a.
- Working Temperature: 0-50 C.
- Phase 1:1.
- Pump Capacity : Rwp 1.5 Hp And Hpp 2 Hp.
- Size: 200(h) X 160(l) X 60(d).



RO CONTROLLER GLOW PLUS 3:3

INDUSTRIAL RO CONTROLLER

- Microcontroller Based Qualitative Accuracy Oriented Pre-programmed Controller With Required Safety Features Like
- Pressure
- Level
- Input Low And High Voltage Protection
- Over Current
- Which Helps Ro For Safe, Smooth, And Smart Automation.

FEATURES

- 3-phase-voltage Display, Monitoring Single Phase Preventer And Voltage Unbalance Protection In All 3-phase Panels. Micro-controller And Smps
- Based Ro Controller.
- Auto Ampeare Settings For Rwp & Hpp.
- All Ampv's Connection.
- Display-2 Line 16-bit Lcd.
- High & Low Voltage Protection.
- Rwp & Hpp Overload And Dry Run Protection.
- Uv & Dosing Pump Protection.
- Hps & Lps Monitoring.
- Dosing Level Float.
- Service And Trip Time.
- Back Wash And Rinse Time.
- 7 Segment Display.
- Tds And Conductivity Display.
- Auto And Manual Mode Option.
- Rwt And Twt Tank Float.
- Flushing And Flushing Interval Time.
- All Setting Are Editable.

TECHNICAL SPECIFICATION

- Supply Voltage: 170v Ac-280v Ac.
- Current Range 0-30a.
- Working Temperature: 0-50 C.
- Phase 1:1.
- Pump Capacity : Rwp 1.5 Hp And Hpp 2 Hp.
- Size: 200(h) X 160(l) X 60(d).



SOLENOID VALVES

Easy, Safe, Economical,
Durable Solution For
Liquid & Gas Automation.

AVAILABLE IN PORT SIZE :

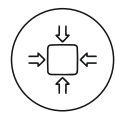
1" | 3/4" | 1/2"

AVAILABLE IN :

AC - 230v
DC - 12v
DC - 24v



High
Capacity
Design



Super
Compact
Structure



Chemical
Resistance



Light
Weight
Design

MULTIPOINT VALVES



DIVERT FLOW
TOWARDS PURITY

AVAILABLE IN :

BASED ON SIZE :
20 NB | 25 NB |
40 NB | 50 NB

BASED ON MOUNT :
TOPMOUNT & SIDEMOUNT.

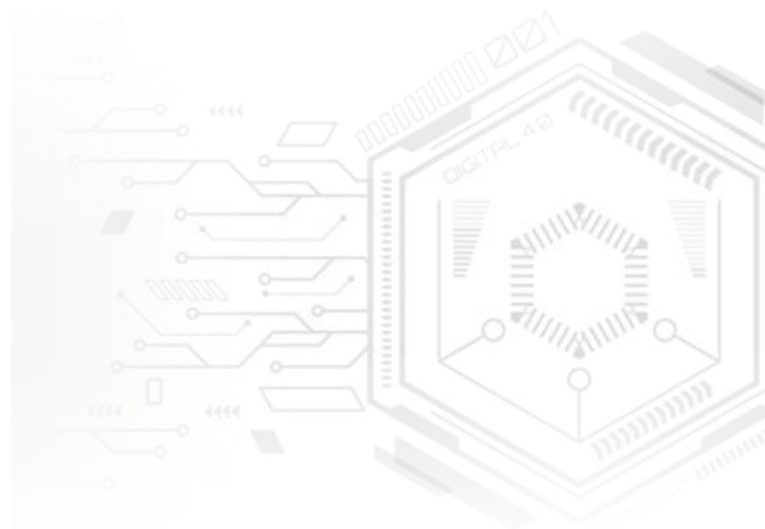
BASED ON USE :
FILTER & SOFTNER

WATER SOFTNER

“SOFTNING” Your Lifestyle

MODEL NAME :

**STAR, SHINE,
GOLD, SPARKLE**



Sr. No.	Product Name	Vessel	MPV	Resin Qty.
1	Softner 100 Star	Vessel 1248	MPV Runxin	50 Ltr Resin
2	Softner 100 Shine	Vessel 1354	MPV Runxin	75 Ltr Resin
3	Softner 150 Glow	Vessel 1465	MPV Runxin	125 Ltr Resin
4	Softner 200 Sparkle	Vessel 1665	MPV Runxin	175 Ltr Resin



PRESSURE TUBE ELEMENTS

DESIGN FOR YOUR HIGH PERFORMANCE RO.

MODEL	LYMPHA 4' END PORT.		LYMPHA 8' ENDPORT.					LYMPHA 8' SIDEPORT.				
	300	300 (4021)	300	450	600	1000	1200	300	450	600	1000	1200
ELEMENTS	1	1	1	1	1	1	1	1	1	1	1	1
	2		2	2	2	2	2	2	2	2	2	2
	3		3	3	3	3	3	3	3	3	3	3
	4		4	4	4	4	4	4	4	4	4	4
	5		5	5	5	5	5	5	5	5	5	5
	6		6	6	6	6	6	6	6	6	6	6
			7	7	7	7	7	7	7	7	7	7



LYMPHA 250 LPH GLOW



• RAW WATER PUMP = MI 50SP / LUBI	1 PC
• HIGH PRESSURE PUMP = 2-11 LCR / LUBI	1 PC
• LYMPHA RO CONTOLLER = STAR PLUS	1 PC
• LYMPHA ULTRA DOSE DOSING PUMP	1 PC
• SKID SS 202	1 PC
• L.P SWITCH = LEEFO	1 PC
• LYMPHA SV 1'	1 PC
• VESSEL 1248 (PRIMIUM GREY)	1 PC
• LYMPHA 25 NB MPV. TMF	1 PC
• 4040 P'TUBE LYMPHA (PRIMIUM GREY)	1 PC
• 20" X 4.5" JUMBO GREY BOWL 1'	1 PC
• LYMPHA ROTAMETER 60-600 LPH	2 PC
• 20' X 4.5' PP FILTER	1 PC
• SAND MEDIA	100 KG
• CARBON MEDIA	25 KG
• RISER PIPE	1 Set
• UPVC FITTING ASTRAL	1 Set
• 21 KG PRESSURE GUAGE (BACK MOUNT)	2 PC
• 7 KG PRESSURE GUAGE (BOTTOM MOUNT)	1 PC

LYMPHA 500 LPH GLOW

• RAW WATER PUMP = MDH 36 A/LUBI	1 PC
• HIGH PRESSURE PUMP = 2-15 LCR / LUBI	1 PC
• LYMPHA RO CONTOLLER = STAR PLUS	1 PC
• LYMPHA ULTRA DOSE DOSING PUMP	1 PC
• SKID SS 202	1 PC
• L.P SWITCH = LEEFO	1 PC
• LYMPHA S.V 1'	1 PC
• VESSEL 1054 (PRIMIUM GREY)	2 PC
• LYMPHA 25 NB MPV. TMF	2 PC
• 4040 P'TUBE LYMPHA (PRIMIUM GREY)	2 PC
• 20" X 4.5" JUMBO GREY BOWL 1'	2 PC
• LYMPHA ROUTAMETER 120-1200	2 PC
• 20' X 4.5' PP FILTER	2 PC
• SAND MEDIA	150 KG
• CARBON MEDIA	25 KG
• RISER PIPE	2 Set
• UPVC FITTING ASTRAL	1 Set
• 21 KG PRESSURE GUAGE (BACK MOUNT)	2 PC
• 7 KG PRESSURE GUAGE (BOTTOM MOUNT)	1 PC



LYMPHA 1000 LPH GLOW



• RAW WATER PUMP = MDH 36 A/ LUBI	1 PC
• HIGH PRESSURE PUMP = 2-18 LCR / LUBI	1 PC
• RO CONTOLLER LYMPHA SHINE	1 PC
• LYMPHA ULTRA DOSE DOSING PUMP	1 PC
• SKID SS 202	1 PC
• L.P SWITCH = LEEFO	1 PC
• LYMPHA S.V 1'	1 PC
• VESSEL 1354 (PRIMIUM GREY)	2 PC
• LYMPHA 25 NB MPV. TMF	2 PC

• 4040 P'TUBE LYMPHA (PRIMIUM GREY)	4 PC
• 20" X 4.5" JUMBO GREY BOWL 1'	2 PC
• LYMPHA ROTAMETER 240-2400	2 PC
• 20' X 4.5' PP FILTER	2 PC
• SAND MEDIA	150 KG
• CARBON MEDIA	50 KG
• RISER PIPE	2 Set
• UPVC FITTING ASTRAL	1 Set
• 21 KG PRESSURE GUAGE (BACK MOUNT)	2 PC
• 7 KG PRESSURE GUAGE (BOTTOM MOUNT)	1 PC

RO ACCESSORIES



JUMBO HOUSING AND BAG ASSAMBLY



ROTAMETER CHRONICAL AND ACRYLIC



PRESSURE GAUGE



FLOAT LEVEL SENSOR



ALL TYPES OF RESINS



COCONUT AND ANTHRACITE CARBON.



☎ 99093 32019
9909332377

🌐 www.lympha.co.in

✉ lymphaindustrial@gmail.com